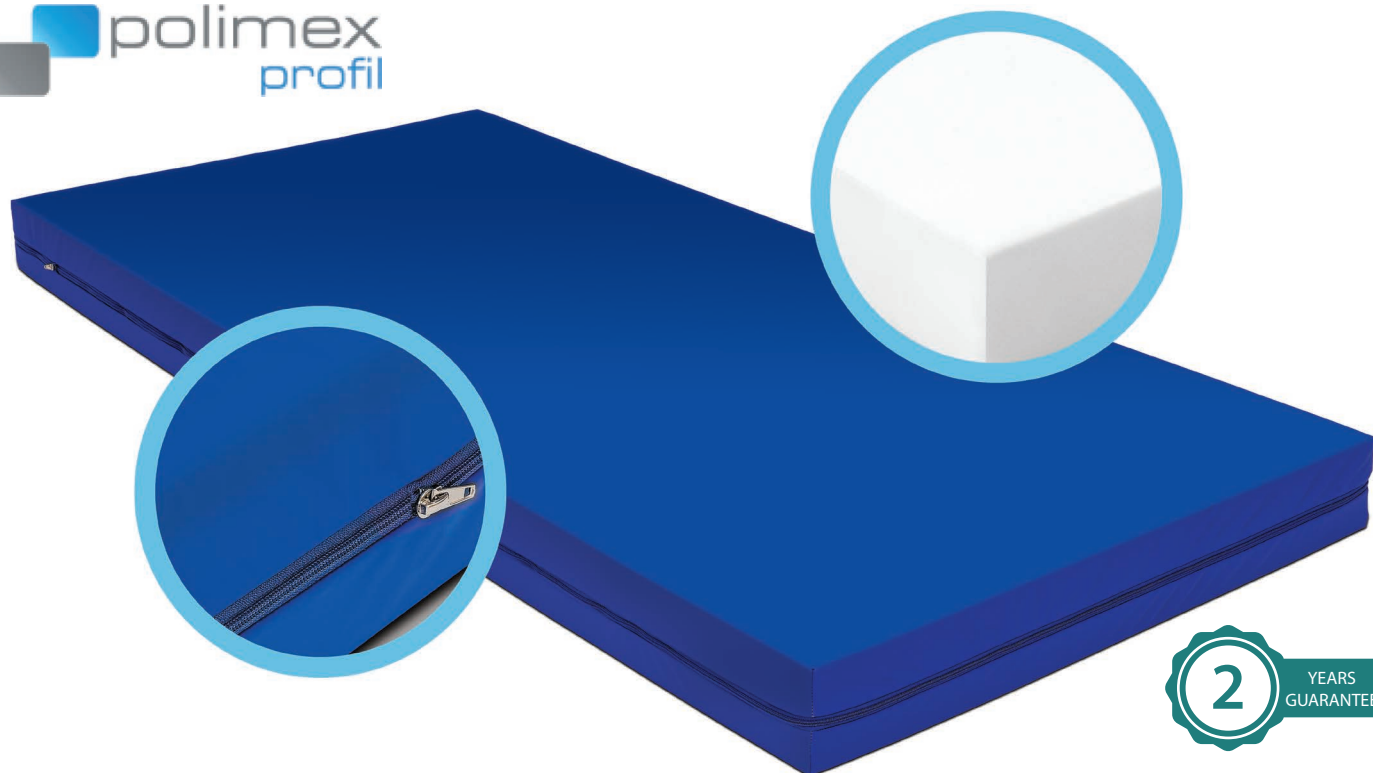


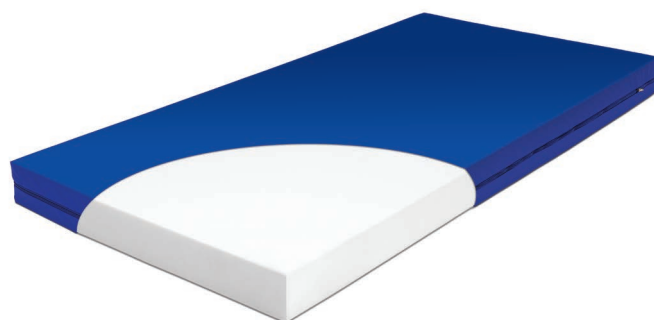
T25/T35

FOAM MATTRESS, DUE TO ITS UTILITY VALUES AND LOW PRICE, IS MOST COMMON USED MATTRESS IN MEDICAL CARE.



General characteristic:

- Polyurethane foam insert (density 25kg/m³ or 35kg/m³)
- Cover with zipper (made of anti-allergic, vapour permeable and waterproof fabric)
- Lightness and high flexibility
- Oeko – Tex 100 Certificate
- Wet cleaning temperature: 95°C, dry-cleaning and ironing temperature: 150°C
- 2 years guarantee
- Important: Mattress suitable for beds with regulated mattress platform



AVAILABLE SIZES:

Width	78cm	90cm
Lenght	187cm	200cm
Height	12cm	12cm

