

EMERGENCY POWER SYSTEMS

Depending on the bed model, various emergency power systems are available. An emergency power source allows the bed to be operated in the event of a mains power failure.

These systems allow a limited number of section movements (raising and lowering) in emergency situations, depending on the battery charge level or condition, as well as the bed type and load applied. If the bed is not equipped with an additional emergency power system, in the event of a power failure the electrical functions of the bed will not operate, resulting in the back and/or leg sections and the mattress platform remaining in their last used position (e.g. raised).

The table below shows the available optional emergency power systems:

		Taurus	Taurus 2	Taurus Junior	Leo*	Bariatric*	Bariatric 2*
	Battery Backup System (ECS)	✓	✓	✓	-	-	-
	Battery Backup System (MCLII)	-	-	-	✓	✓	✓
	Emergency Lowering System	-	-	-	✓	✓	✓

**It is not possible to combine two systems for one bed*

Key information:

- Emergency Lowering System (rechargeable battery) – it is not possible to mount it later to the set – **the decision about the battery must be made at the time of ordering the bed.**
- The Battery Backup System (MCLII) and the Emergency Lowering System are alternative solutions and cannot be used simultaneously.



Description of emergency power supply systems:

1. **Battery Backup System (ECS)** (*Taurus, Taurus 2, Taurus Junior*)

An additional emergency power supply system integrated with the ECS control box. A bed equipped with a standard control box cannot be fitted with a battery – it is necessary to order a dedicated control box equipped with a socket for two 9V batteries.

Key information:

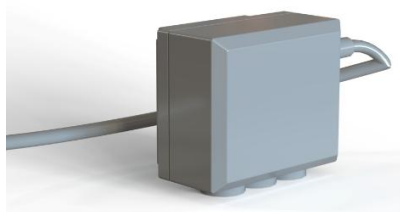


- Two 9V batteries,
- batteries are not rechargeable,
- batteries are replaceable.

2. **Battery Backup System (MCLII)** (*Bariatric, Bariatric 2, Leo*)

An additional emergency power supply system based on three 9V batteries. The system is connected to the input in a dedicated MCLII control box – beds equipped with a standard control box do not have the appropriate slot.

Key information:



- Three 9V batteries,
- batteries are not rechargeable,
- batteries are replaceable,
- battery set with adapter allows the system to be mounted to the control box.

3. **Emergency Lowering System** (*Bariatric, Bariatric 2, Leo*)

Emergency lowering system based on a rechargeable battery mounted directly on the bed frame.

Key information:



- When connected to the power source, the battery enters charging mode.
- the system housing is permanently mounted to the bed frame with screws,
- it is not possible to add the system later, as it requires drilling holes in the frame - **the decision to use a rechargeable battery must be made at the time of ordering.**

