

Leo „L”

PANTOGRAPH CONSTRUCTION
Full length side rails



Key features:

- Full length side rails
- Modern, pantograph construction
- Wide range of bed ends
- Wide height adjustment (lowest position - 30cm)
- Bed ends independent from construction
- Max. working load - 215 kg
- 2 years guarantee

Leo „L”



L-02
Wooden bed end with wooden slat



L-01
Wooden bed end with chrome tube

BED ENDS

Due to bed construction we can offer wide range of bed ends, made of laminated board and solid beech wood.

HEIGHT ADJUSTMENT

While designing Leo we paid careful attention to bed height adjustment - it is almost 50cm. Lowest position -30cm provides comfortable usage of bed and also reduces risk of falling. Maximum height - almost 80cm-remarkably ease care of lying patients for medical staff.

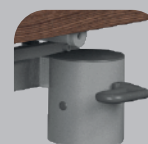


SIDE RAILS

Full length wooden side rails are the standard equipment of all nursing care beds. They protect the patient up to 385 mm over the mattress platform. For additional protection there is available a set of Side Rails Height Extension, which increases the height of side rails up to 530 mm. This solution is very helpful when the use of pressure mattresses is needed. Full-length wooden side rails are manufactured according to current standard EN-60601-2-52

CASTORS

In our offer we have both plastic and metal castors, with various diameters. For 50mm we provide possibility to order hidden castors. Mobility of the bed is increased by additional options, like individual (standard), axial or central brake.



Basic dimensions	
Overall width x lenght	127 x 207
Mattress platform width x lenght	110 x 200



Backrest section adjustment



Tigh and calf section adjustment



Auto-Contour function



Trendeleburg position's angle 15°



Reverse Trendeleburg position's angle 17°



Height adjustment 50cm

Adjust design to individual needs

Wide range of bed ends, shapes and great choice of finishings

L-03
Bicoloured wooden bed end



L-04
Carved wooden bed end



L-05
Solid wooden bed end



FINISHING Wood

Standard colours



Non-standard colours

